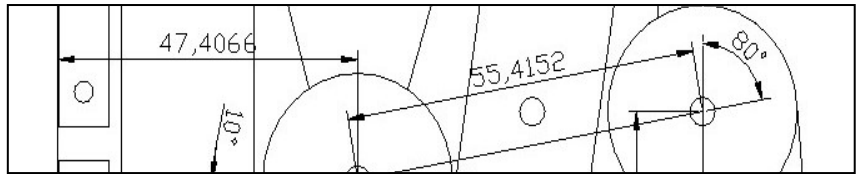


Gastgeb & Partner Informationssysteme

Pater-Frey-Ring 69a
D-86698 Oberndorf
Tel. +49(0)9090 9598-363
Fax +49(0)9090 9598-369

Website: www.gastgeb.org
Product: www.awa2000.de
Email: info@gastgeb.org



PLC*plus

[awa_2000] Maintenance

*if SPSplus is a brand name: please change back to SPSplus with:
PLC = 'programmable logic controller' in parentheses

PLCplus, Solutions Library

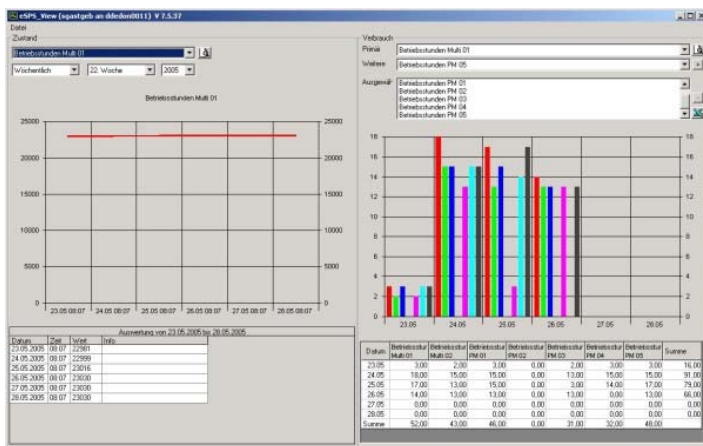
- Online connection to Siemens and Mitsubishi controllers
- Direct Ethernet connection or access to database (OPC server)
- Historical cyclic storage scheme for value series
- Visualization of the control scheme and creation of control buttons
- Analysis of the value series
- Description of the automated switching operations
- Alarm format definition for errors

Tag/Steuerung	Adresse	Alarm
Alarm Rohproduktladen Silo Abgang	10.84.50.43	OK
Alarm Rohproduktladen Silo Zugang	10.84.50.44	OK
Alarm Rohproduktladen Tank Abgang	10.84.50.45	OK
Alarm Rohproduktladen Tank Zugang	10.84.50.46	OK
Line12	10.84.50.43	OK
Steuerung Heizung	10.84.50.38	OK
Steuerung Lüftung	10.84.50.37	OK
Steuerung Master (Melsec Net)	10.84.50.40	OK
Steuerung Trockner Linie 2	10.84.50.36	OK
Trockner Linie 1	10.84.50.42	OK
Trockner Linie 3	10.84.50.44	OK

Alarm Format Definitions (AFD)

Each day, data can be recorded in optional intervals. The curve generated from the value series can be shown on screen and analyzed.

The output can also be rendered directly in Excel. In this way, the data maybe processed in any desired fashion.



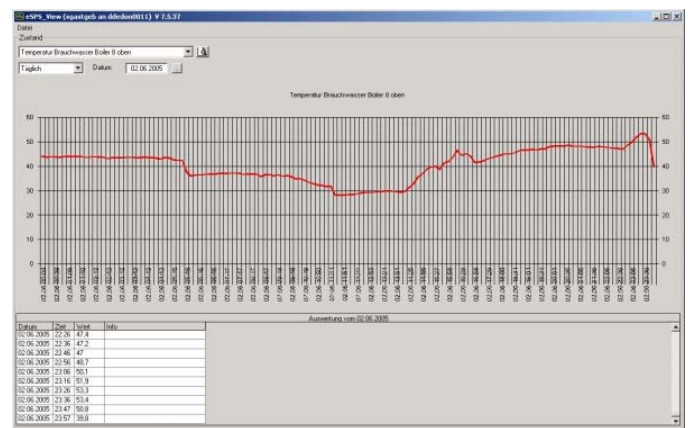
Value Series Analyses



Tag Monitoring

Steuerung	Port	Status
Trichteranlage	1285	OK
APA	----	Err 25199627
Trockner Linie 3	1286	OK
Line12	----	Err 25199627
Trockner Linie 1	----	Err 25199627
Steuerung Lüftung	1285	OK
Steuerung Heizung	1287	OK
Steuerung Trockner Linie 2	1286	OK
Steuerung Master (Melsec Net)	1285	OK

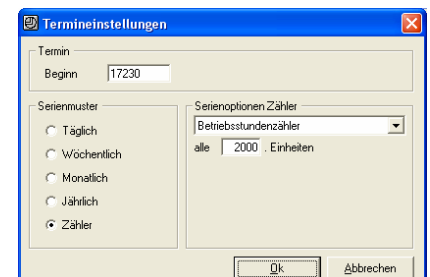
Monitoring the Controls



Data Series Curve

Time stamps containing values can be compared and differences over time may be calculated. In this way, usages can be output and analyzed.

The counters/meters themselves can be used as the basis for a meter-based preventive maintenance scheme.

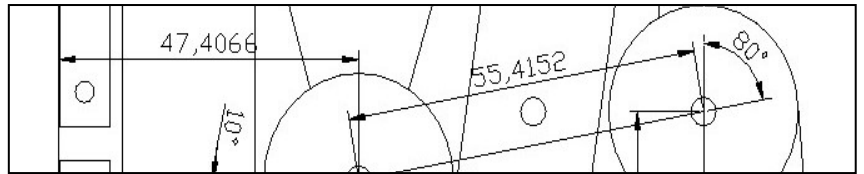


Service Scheme by Counter Reading

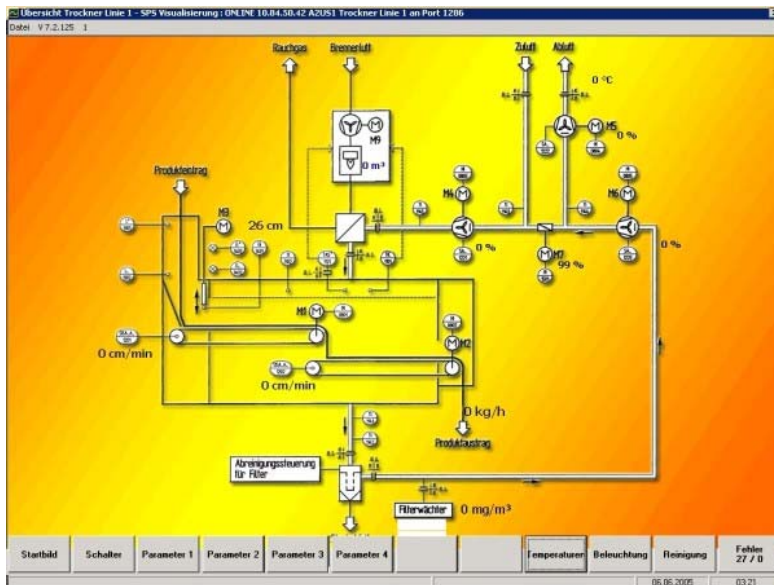
Gastgeb & Partner Informationssysteme

Pater-Frey-Ring 69a
D-86698 Oberndorf
Tel. +49(0)9090 9598-363
Fax +49(0)9090 9598-369

Website: www.gastgeb.org
Product: www.awa2000.de
Email: info@gastgeb.org



[awa_2000] Maintenance

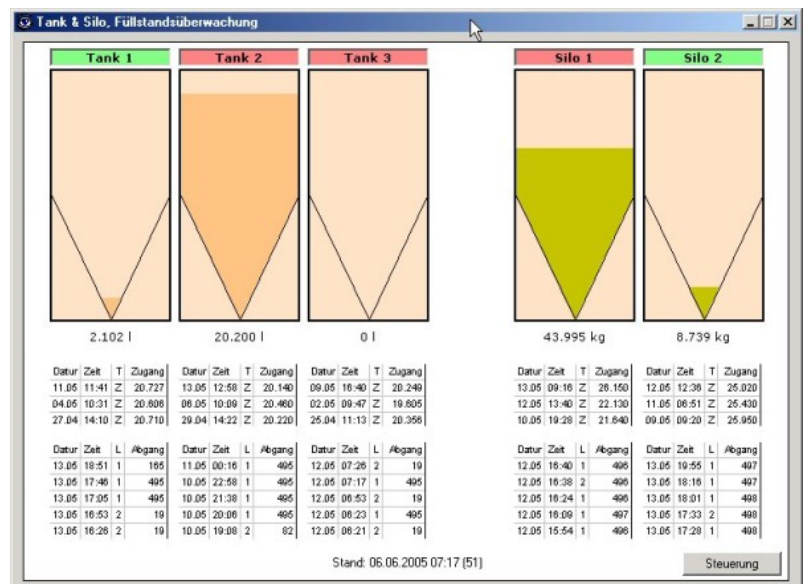


Visualization and Control Buttons

Control Scheme Visualization

- Direct Ethernet connection to the control
- Optional connection via SQL server
- Monitoring, control and remote control
- Definition of the operating elements:
 - Switch
 - Icon
 - Switch Key
 - Dependent Images
 - Dependent Texts
 - Keyboard Block
 - Scroll Bar
 - Funnel
 - Graphics
 - and many other items.

- Applying the solution to finished goods
- Visual Studio Developer API
- Description of the counters/meters connected via the control
- Call to the visualization code by directly using the surface



Example: Tank and Silo Monitoring

Available Modules:

- ePLC_Connect
- ePLC_Client
- ePLC_VisEdit
- ePLC_Visualization
- ePLC_History
- ePLC_Planner
- ePLC_View
- ePLC_AlarmFormat

The solution is designed as a component system and can be adapted and expanded at will. This is our suggestion in response to the many different needs of individual users. Individual adjustments are necessary in all cases.