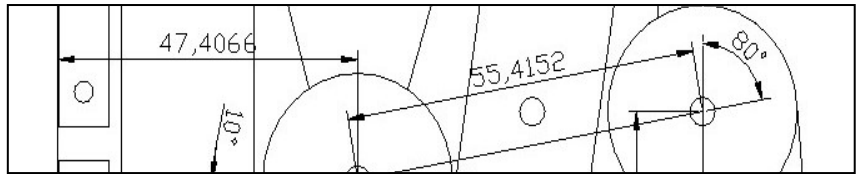


Gastgeb & Partner Informationssysteme

Pater-Frey-Ring 69a
D-86698 Oberndorf
Tel. +49(0) 9090 9598-363
Fax +49(0) 9090 9598-369

Website: www.gastgeb.org
Product: www.awa2000.de
Email: info@gastgeb.org

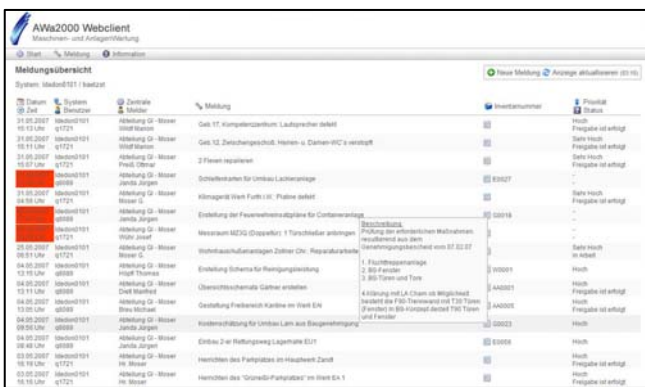


AWa2000 Web Service Option

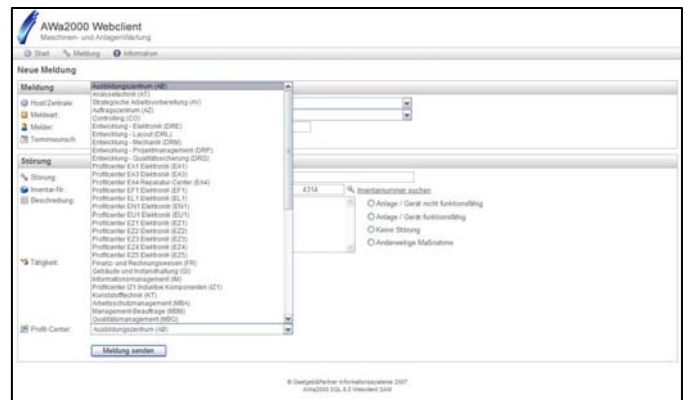
[awa_2000] Maintenance

The web services add to Awa2000 the capability to use a browser front end to capture and process data. The necessary connectivity exists between the web server and the Awa2000 database. This added data processing capability will be further developed. Currently, web services are available for

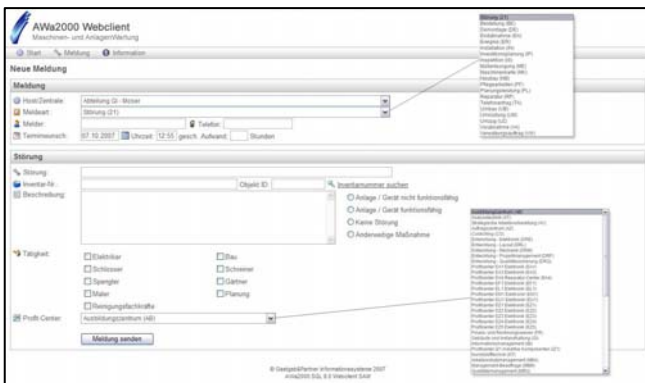
- the Awa2000 web error-in-service client module
- the Awa2000 Web operator services
- and the development of Awa2000 web order processing is currently in progress



The browser screen shows all captured, open and processed service procedures. Tool tips and selectable functions combined with color coding provide an easy grasp of the service jobs in progress

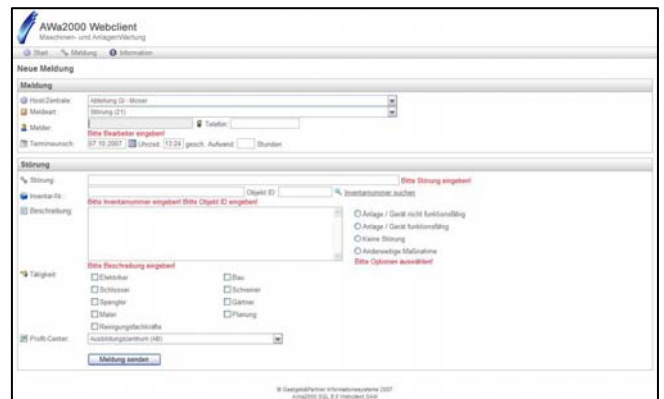


While working in the browser interface, objects can be listed using the incremental search function and can be directly assigned or matched. All regularly installed options are also available in the web solutions.



Hosts, order types, the profit center and cost centers are available using the drop down menus.

There is no problem mixing the functionalities of installed modules and web clients.



Mandatory field entries control the correct data entry. Only when the mandatory entries are complete is it possible to store the data set.

Requirements:

- Windows Server 2000 or
- Windows Server 2003 (preferred)
- Internet Information Server 6.0
- Microsoft .NET Framework 2.0
- Microsoft ASP.NET AJAX Extensions