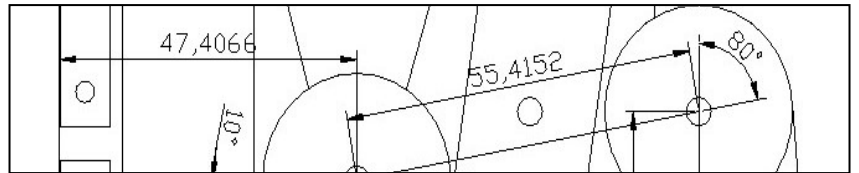




**Gastgeb & Partner Information Systems**

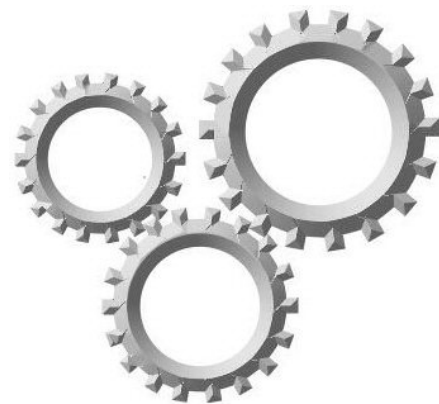




## Gastgeb & Partner, the Enterprise

The company Gastgeb and Partner Informationssysteme has been in the business of developing software for recurring audit and maintenance planning for 17 years. Our administrative employees, external distributors and project-related independent contractors form the foundation of our company. They account for the high level of customer satisfaction and for the development and implementation of practice-oriented, streamlined solutions.

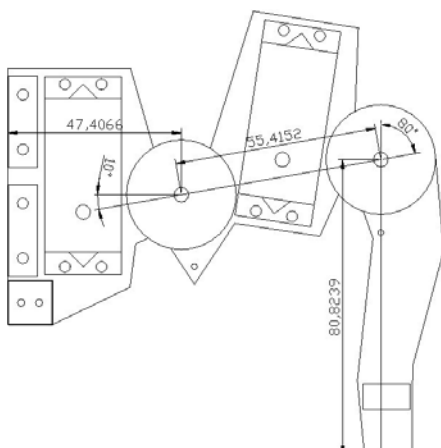
We connect with our clients and users during the development of real life implementations. This constant exposure to our clients and practical information ensures that our applications are state of the art and fit customer needs. The users of our applications often contribute ideas, which we turn as quickly as possible into interesting features and program updates for the benefit of our entire circle of clients. The ideas and improvements are certain to flow back to our users via our support platform.



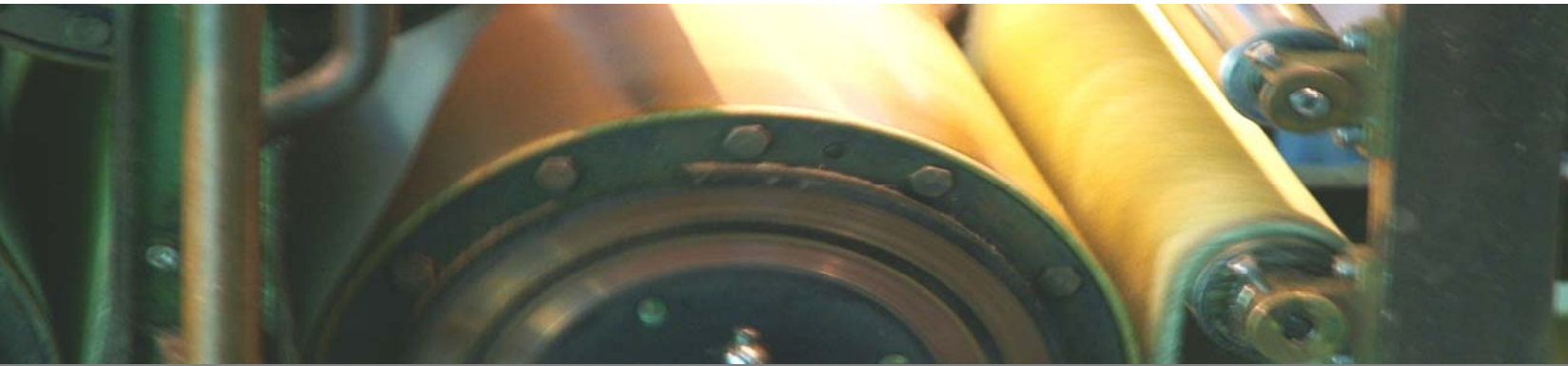
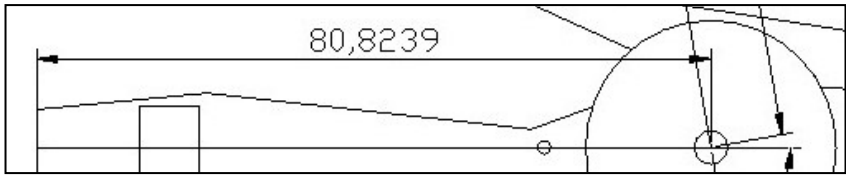
Awa2000 is an IPS system for the management of all events concerning the headquarter and all company sites, buildings, equipment, components, machines, tools, measuring devices and other objects. You will be able to manage these objects at will in a directory tree with as many levels as you like, using a graphical navigator (browser), lists, symbols and icons according to various sorting and selection schemes.

You may trigger cyclic inspections and maintenance services and also record errors, failures, repairs and events, such as restructuring, certifications, audits, etc. The system will enable you to allocate resources, such as personnel time, spare parts, measurements, tools and more. You can also record causation, error and call back codes.

For the analysis you may pick your choice of report generator and Excel output. Awa2000 automatically generates reminders of recurring activities and sends this information to a target printer as needed or emails the information as PDF order to the appointed person in charge. This eliminates all manual search procedures.

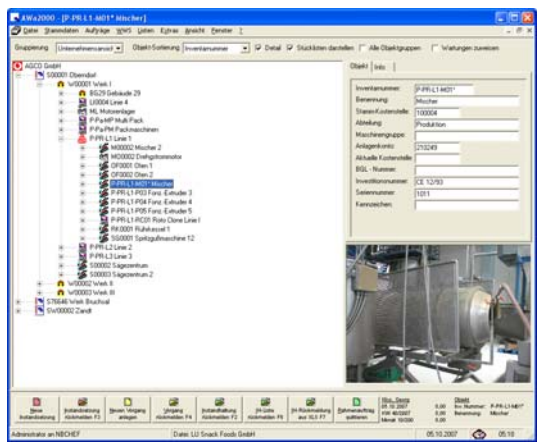






[awa\_2000] AnlagenWa

rtung für Windows

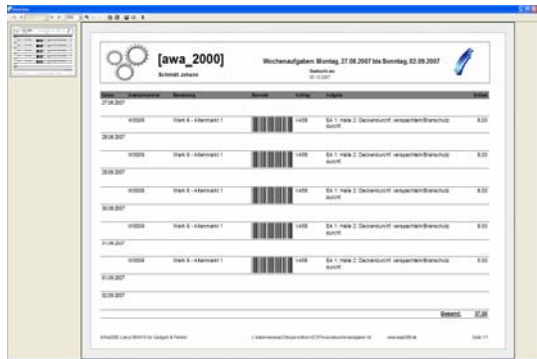
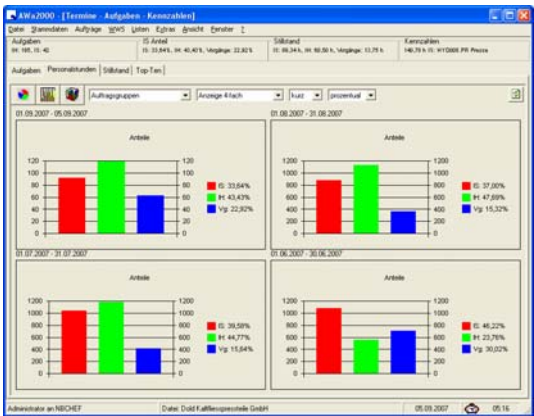


Using **Awa2000** you manage objects, i.e. your headquarters, company sites, real estate, equipment, components, machines, measuring devices and other objects. You have the option to add objects to this grouping and adjust the list to your own train of machines. Service requests in the three categories maintenance, repair and events as well as news and recurring events form the complete history.

In a timed or event-driven process, the orders for cyclic preventive measures along with a preview and a deadline for the service are automatically passed to the addressee via printout, monitor or per email as PDF file. New tasks, such as errors, failures, restructuring, tool replacement, auditing and improvements, enter the system through a failure-in-service module or optionally also via a BDE connection. Emphasis is put on the monitoring of recurring tasks and alerts to services falling due.

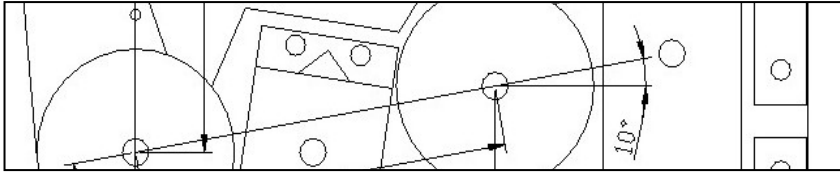
**Awa2000** creates lists, reports and diagrams with master data, historical data, totals, codes and key data for many object groups. Many different outputs can be created, while considering the different resources, such as goods, spare parts, personnel, measurements, special acquisitions as well as failure origination, error, failure and callback codes. Many data may be retrieved, e.g. personnel reports, service reports, event logs, test planning, work plans and cost center reports among other data outputs.

In a context-oriented process, you create lists ordered by object or structure, by personnel, cost center, machine category or department. Interfaces enable the data exchange with other systems via ODBC, Excel or CSV files and enable you to convert data to fit different DB systems



Learning to operate **AWa2000** is really child's play. Using it does not involve an elaborate preparation and parameterization of the master data to achieve results. The depth of data capture determines how intricate the results will be.

Aside from the basic package, we offer work place-specific applications to simplify the operations in support of interprocess communication (IPC) with touch screens and scanners but without keyboard or mouse. Available web services retrieve data about activities from the intranet or automatically deposit such data in intranet memory. The remote capture from mobile devices of order callback messages, counter/meter readings and for the warehouse management make the user independent of stationary PCs. Data may be captured, processed or adjusted online or offline

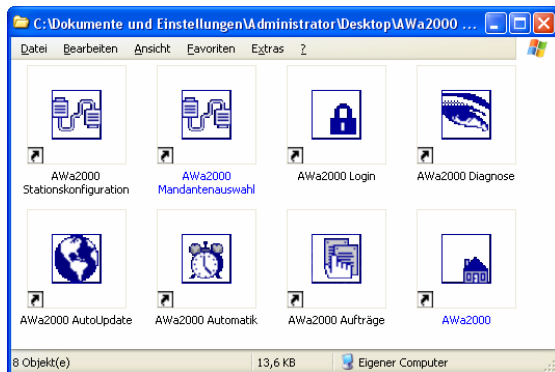


## [awa\_2000] Module

**AWa2000** has a modular design. Aside from the main module for all functions, there are also work place-specific modules with functionalities, which comprehensively cover operations in many specific sectors.

### Basic Modules

- AWa2000 Main Module
- AWa2000 Order Processing
- AWa2000 Automatic Systems
- AWa2000 AutoUpdate
- AWa2000 Diagnostics
- AWa2000 User Management
- AWa2000 Central Login
- AWa2000 Analyses
- AWa2000 Personnel Planning Standard



### Accessory Module

- AWa2000 Goods Management (Enterprise Resource Planning, ERP)
- AWa2000 Budget
- AWa2000 Client Management
- AWa2000 BGL / Facility Management
- AWa2000 Visualization
- AWa2000 MDE / BDE and PLC
- AWa2000 Personnel Planning, Professional

### Monitor Modules

- AWa2000 Error-in-Service Module (SAM Client)
- AWa2000 Error-in-Service Module (SAM Host)
- AWa2000 Quality Assurance

### Accounting Terminals

- AWa2000 Magazine Terminal
- AWa2000 Repair Shop Terminal
- AWa2000 Warehouse Terminal
- AWa2000 Events Terminal
- AWa2000 PDA Terminal
- AWa2000 Web Client Terminal

### Web Modules

- AWa2000 Web Server Basic SQL
- AWa2000 Web Client Order Processing
- AWa2000 Web Client Workmen Services
- AWa2000 Web Client Error-in-Service Module

### Analysis Modules

- AWa2000 Safety and Environment
- AWa2000 Error Analyses OEE, Codes

### Interface Modules

- AWa2000 Remote Maintenance
- AWa2000 Data Interface to Third-Party Systems
- AWa2000 Foreign Language Integration

### Support

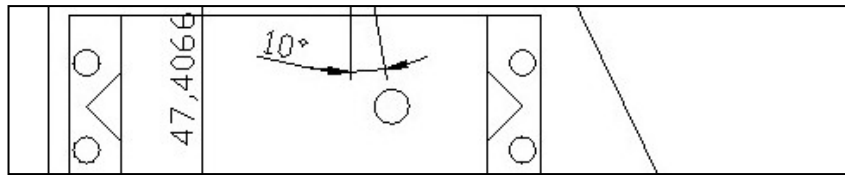
We support you by telephone, email, Internet or fax and answer your questions about our products, the implementations and the programming as well as the product documentation. You also receive program updates via the Internet, including advancements to the existing software.

### Reference Compendium



Find further references here: [www.awa2000.de](http://www.awa2000.de)





## Weitere Produkte

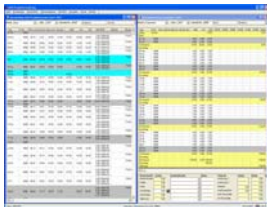
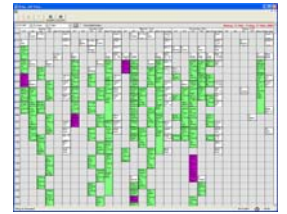


### ZES (ZugangsErfassungssystem, Access/Capture System)

System to process the following tasks: management of all employees, contractors and visitors of a company, the automatic or manual capture of all entries and exits through the different gates, creating and managing the documentation and administrative processing of the registration, checks and approval documents, biometric access controls through single-entry secure access gates, measures to protect against radiation and dosimetry, dose monitoring and recording. Other systems functionalities are the time capture and analysis, monitoring the shipments of goods and issuing ID cards for personnel, visitors and contractors. A camera is connected to the system to create pictures and picture IDs.

### OPlog

The Oplog system supports the administrative personnel of ambulatory surgical and day clinics. Aside from the occupancy and appointment management, the system captures the services according to EBM (unified fee schedule), OPC (operations planning & control), ICD and several other schedules. The surgical documentation is facilitated through the use of text units and variable text elements as indicated and in line with the diagnosis. In this way, reports can be quickly distributed to all participants, including the patient, specialist, personal physician, anesthetist and the clinic. A document archive with any type of patient documentation along with the fee settlement is executed using the OPlog system. A simple order management system for surgical supplies rounds off the system.

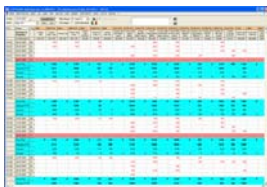


### PV (ProjektVerwaltung, Project Management)

The project management system was first introduced in 1994. It was designed for the receiving area of conveyor systems in the automotive industry to manage the presentation of offers, order processing with the management of drawings, parts lists and other order documentation ranging from purchasing and storage via order processing, construction, inventory control, assembly and factory all the way to the shipment and assembly at the construction site. The functions include the settlement of all pertinent construction, factory and assembly times, the capture of all used raw materials as well as the factory orders for components, component assessment and product costing analysis. Systems services include providing lists of used materials compiled from the parts lists, the automatic project documentation for the customer, navigation buttons as well as purchased items and spare parts lists.

### Business Visitor Management

The visitor management is a less elaborate version of the ZES. It is designed especially for the visitor management of a business. The automated system manages the checkout of persons using email, creates visitor day passes and ID cards for contractors working on the premises for several days. The system can also manage and assign parking places. An innovation is this system as pure HTML solution without installation. This supports the use of the system in many different places. It also supports information terminals and can issue picture IDs provided a camera is attached.

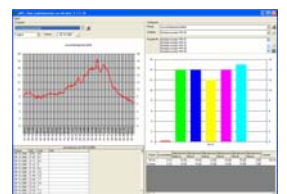


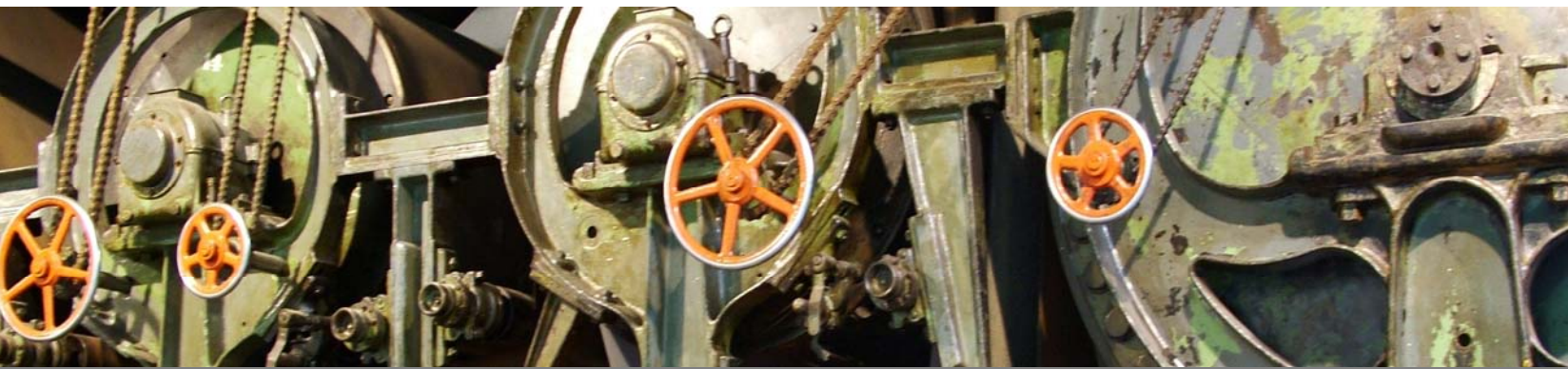
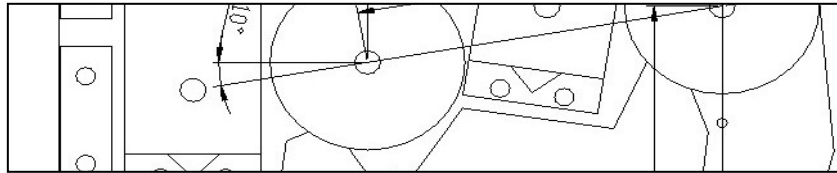
### ERP / PPS

This is a complete project planning system (PPS) with a complete control system for a production facility. The system is mostly designed for the food industry. The PPS system enables the traceability of products without gaps from the raw materials arriving from the vendor to the finished product in the hands of the customer. Another integrated function is an automated record system for batch tracing. Among the software functionalities are the management of raw materials, the raw material inventory control, the production planning, the finished goods storage management, the logistics coordination, the loading plans and the controls to make sure the FIFO principle applies to the storage management, the correct loading, the commissioning of mixed pallets and the data system dialogue via EDIFACT. After proper adjustment, this individual end-to-end solution can serve as a model for similar factories.

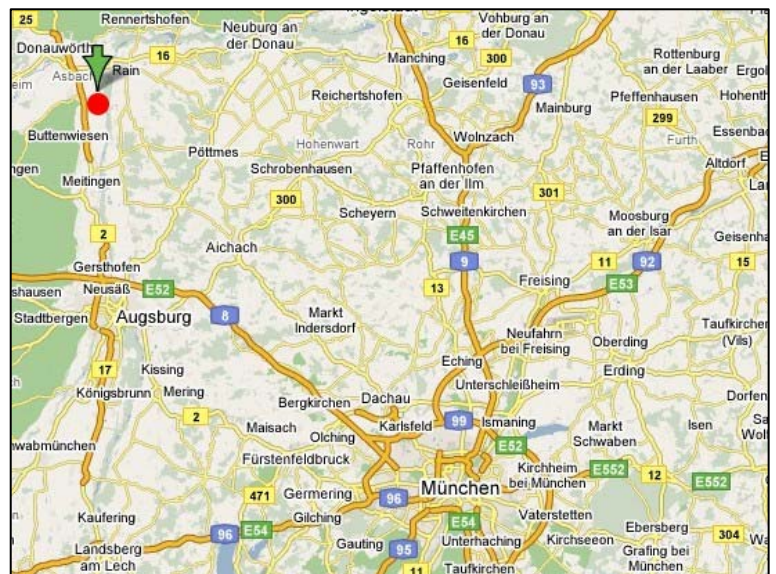
### PLC plus Utility

The PLC plus package is a combination of several programs with functions for the dialogue and the PLC control at Mitsubishi and Siemens. An unlimited number of controls may be integrated. The system contains very diverse applications. There is the definition auf automated, timed switches by the day of the week or date and time of the day. The system also manages the histories of certain meters/counters as cyclical series for any desired interval and period for later analysis and graphical display. In PLC View, the system prepares the stored data series for further processing and output in Excel. The PLC visualization provides the control surface for IPCs handling the controls and remote controls with direct access via the Intranet or the connection via PLC\_Connect. The PLC\_VISEdit function enables the creation of any desired control surface for IPCs as part of the control and remote control systems.





**Contact**



**Gastgeb & Partner**  
Informationssysteme

**Gastgeb & Partner Informationssysteme**

Pater-Frey-Ring 69a

D-86698 Oberndorf

Tel. +49(0)9090 9598-363

Fax +49(0)9090 9598-369

Company:

[www.gastgeb.org](http://www.gastgeb.org)

Product:

<http://english.awa2000.de/>

E-Mail:

[info@gastgeb.org](mailto:info@gastgeb.org)